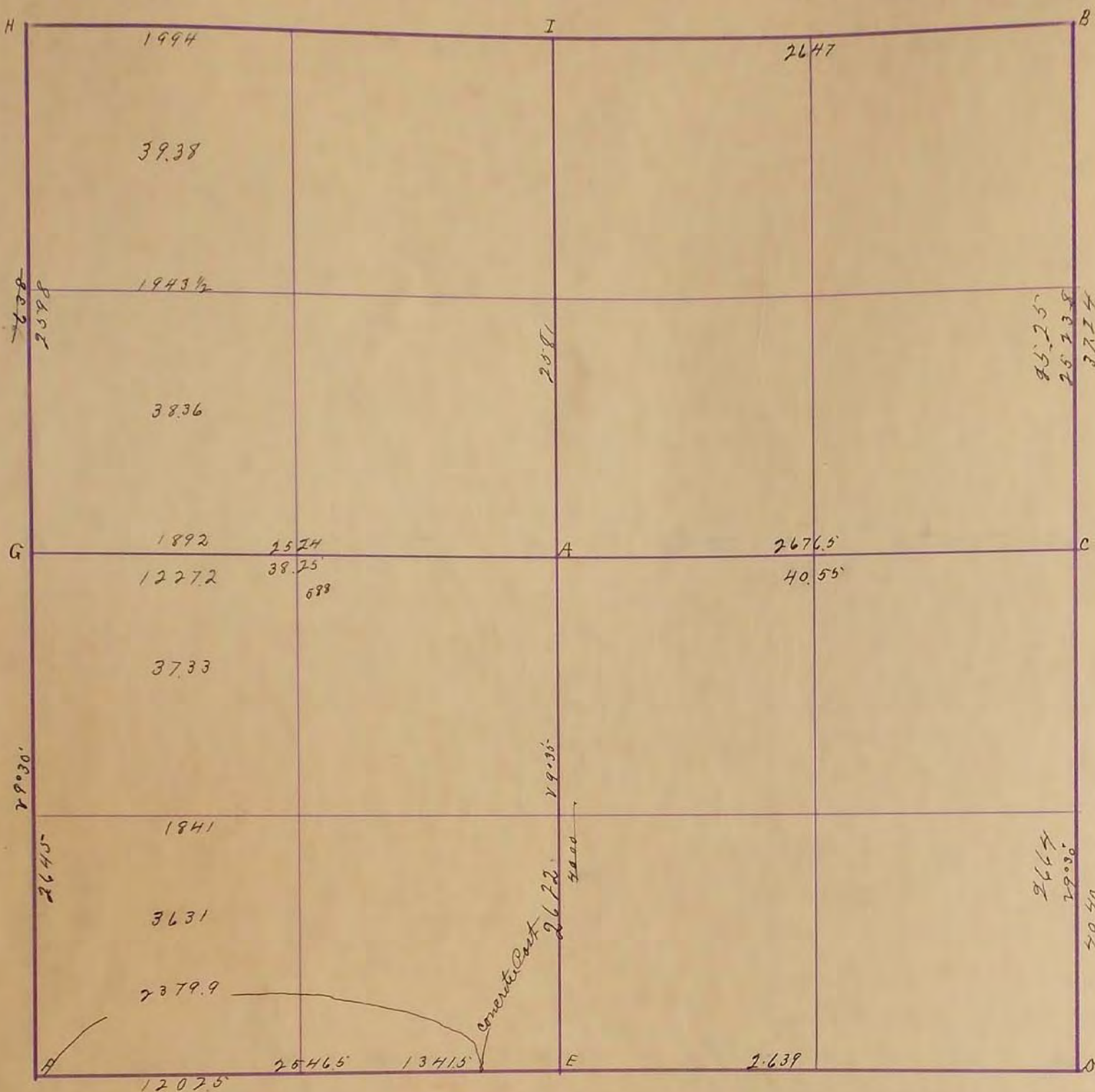


# SURVEYOR'S RECORD

Section 18

Township 106

Range 39



Oct. 2 1897

- A. Post mound + pits
  - B. Gov mound + Iron stake F. Cor. 46.6 S.W. F Cor 39.9 N.W. { Corner post 46.3' Ht. cement for 46.8 S.E. F Cor. 29.8 N.E. F Cor. 40' S.E.
  - C. Stone 133 E of corner
  - D. Stone
  - E. Gov mound 13' 2" S of tree line
- J. H. Woolstencraft

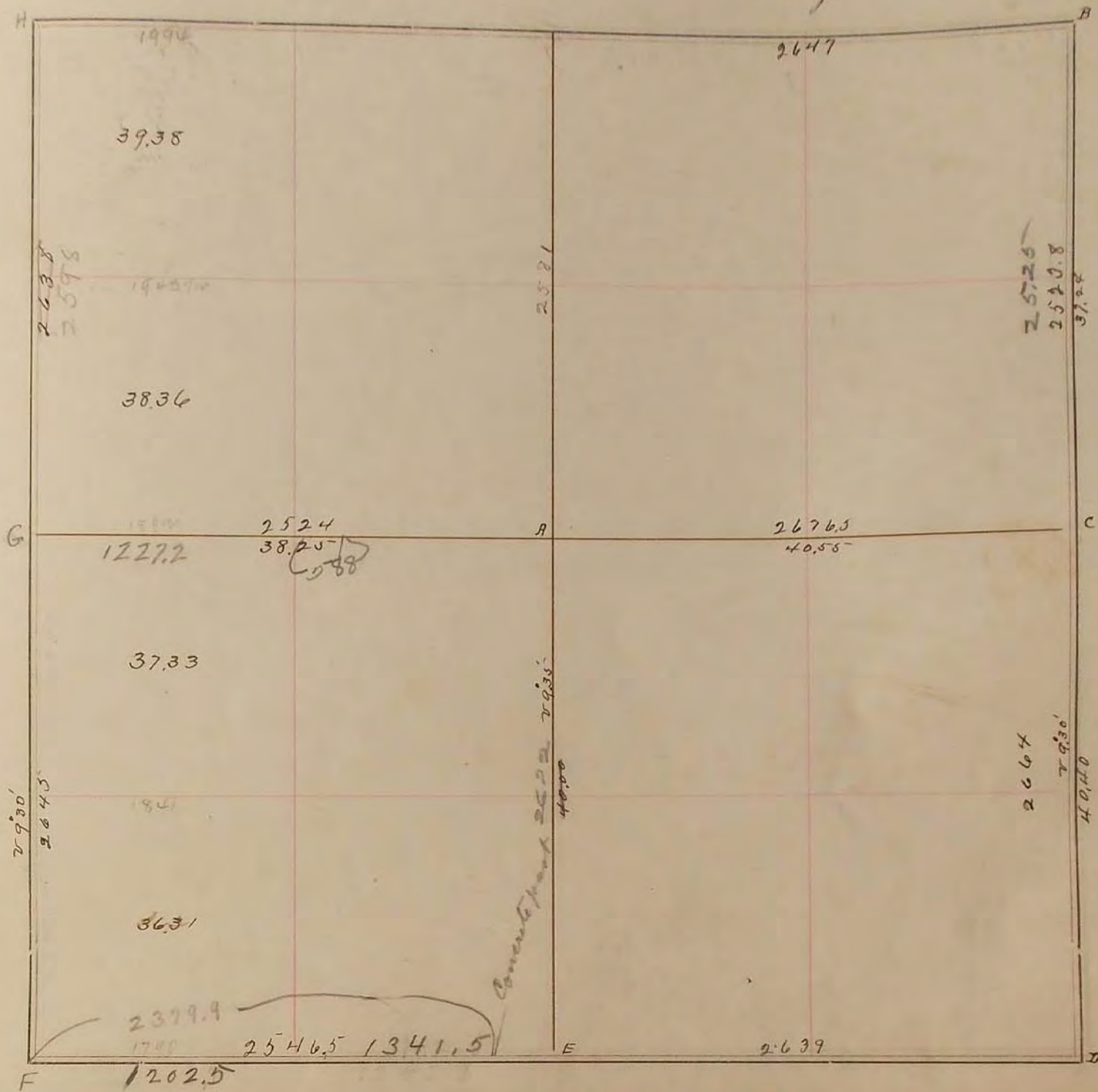
Nov. 14 1909

J. H. Woolstencraft

- "H" Stone + C.P. 41.6' SW, L.P. 48.4' N.W.
- F. Stone, Section 19-105-39 for R.P. "B"
- E. Stone, Section 19-105-39 for R.P. "C"

SURVEY No. 28

Section 18 Town 105 Range 39



FIELD NOTES.

Oct. 2, 1897

- A Post mound + Old Blue Stone +
- B Gov mound and iron stake Feet. 46.6 S.W. F Cor. 39.9 NW, F Cor. 29.8 NE, F Cor. 40 SE
- C Stake 12' x 12' 33' E. of corner
- D stake
- E Gov mound 13 1/2' S. of true line  
1377 N. of line

H Stake C.P. 41.6 S.W. L.P. 49.8 N.W.

Nov. 14, 1909

J.W. Woodlawn

M.E. Kopman July 8-1952

one + (Cement Post 46.3 SE) (Cement C.P. 46.2 SE)

2526  
1248.7  
1277.3

1320  
1277  
43  
215

12487  
21.5  
1227.2

1892  
66  
11352  
1332  
12487

3825  
66  
22950  
22950  
232450  
12487  
1275.8

1767  
66  
1833  
1833  
1833  
1833  
1833  
1833